



## Z-BR II Owner's Manual

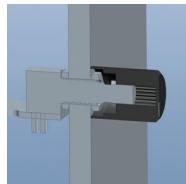
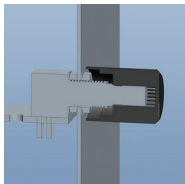
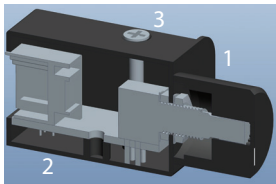
Before operating the unit, please read this manual thoroughly and retain it for future reference.

# The Zapco Z-BR II Dash Remote

An accessory remote level control for the following Zapco Amps:  
Z-II Series, Z-SP Series

The Zapco Z-BR II adds new versatility to let you find the best looking and most convenient mounting for your new remote. You can mount the Z-BR II under dash with the solid metal housing or you can disassemble the housing to remove the bare pot for in-dash mounting.

If you remove the 2 screws from the housing it will slide back and off the remote leaving just the remote and top bracket. Then remove the knob and you can take the bare remote out of the bracket for mounting in a dash or other convenient panel. We have included two knobs with the Z-BR II. The 20 mm knob is included to match the size, look and feel of the volume control of most common head units. The 13 mm knob is useful in a crowded dash where finger clearance is needed. It also provides more clearance when mounting the remote under the dash.



Cross section of the Z-BR II shows:

1. Front remote bracket
2. Removable rear housing
3. Screws that release the housing

For mounting in a dash or other panel you must drill a 5/16 hole for the shaft of the Remote. The two sets of Nuts and washers allow the Z-BR II to be mounted in panels of different thickness.



**Modesto, California USA**  
**Since 1974**

**zapco.com**